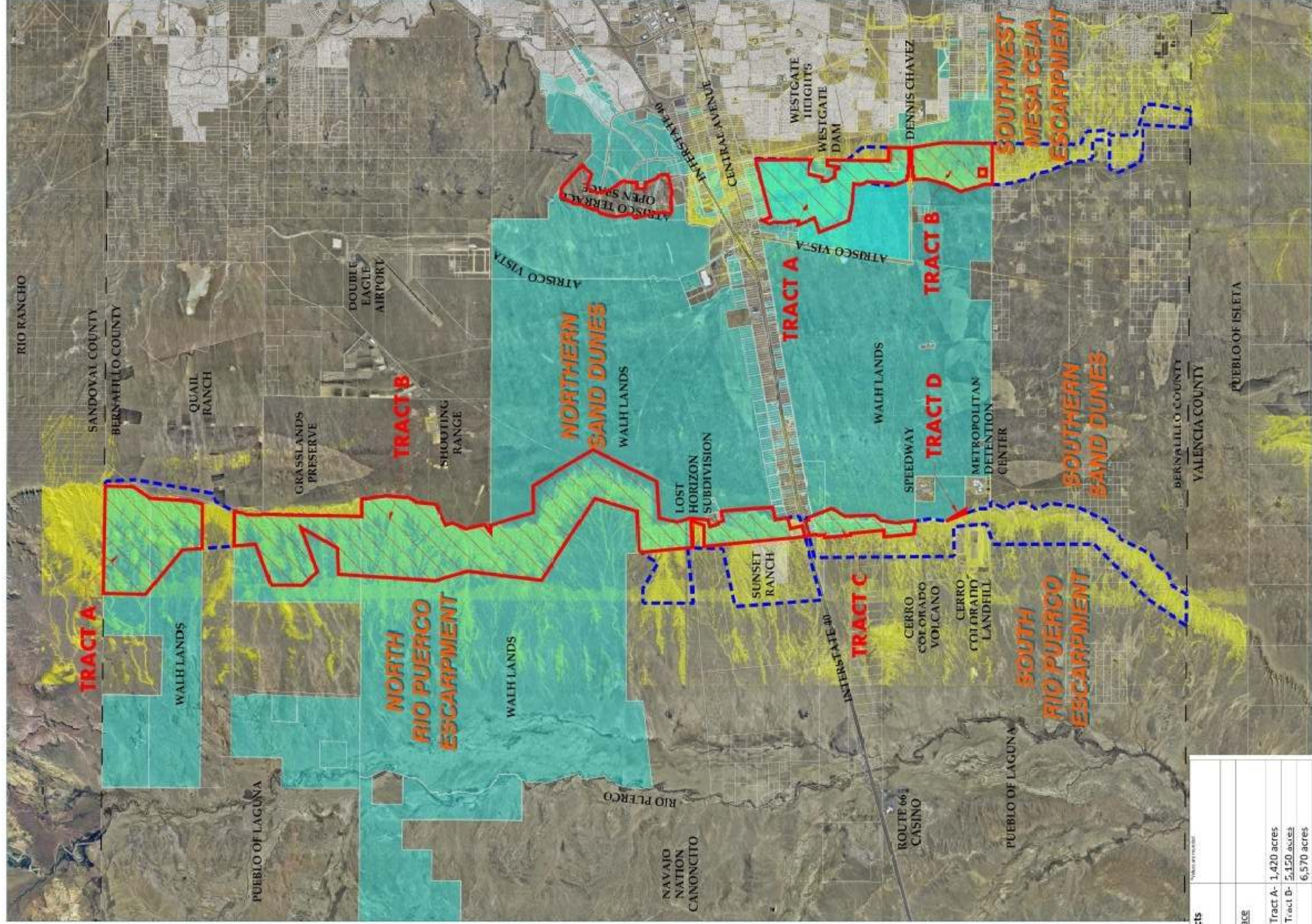


Proposed Open Space and WALH Lands



| Proposed Open Space Tracts within WALH Lands: | |
|---|--------------------|
| Rio Puerco North Open Space North of I40 | |
| Tract A- | 1,420 acres |
| Tract B- | 5,150 acres |
| Subtotal | 6,570 acres |
| Rio Puerco South Open Space South of I40 | |
| Tract C- | 330 acres |
| Tract D- | 7 acres |
| Subtotal | 337 acres |
| Southwest Ceja Open Space South of I40 | |
| Tract A | 1,190 acres |
| Tract B- | 570 acres |
| Subtotal | 1,760 acres |
| Total | 8,667 acres |

LEGEND

-  10% OR GREATER SLOPE ANALYSIS
-  TRACTS WHERE WALH PROPERTIES AND PROPOSED OPEN SPACES AREAS OVERLAY
-  PROPOSED OPEN SPACE LIMITS BASED ON SLOPE ANALYSIS

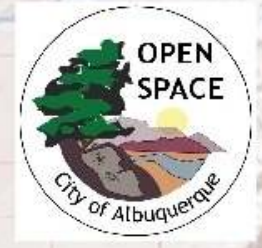
NORTH RIO PUERCO, SOUTH RIO PUERCO AND SOUTHWEST MESA CEJA ESCARPMENTS

PROPOSED OPEN SPACE VS. WALH LANDS

JANUARY 23, 2012

Bohannon & Huston

File: 2012-01-23-10-18-10.mxd, Project No. 1000000000, P:\Projects\2012\1000000000_1000000000\1000000000_1000000000.dwg



Other Lower-Priority Open Space Acquisitions

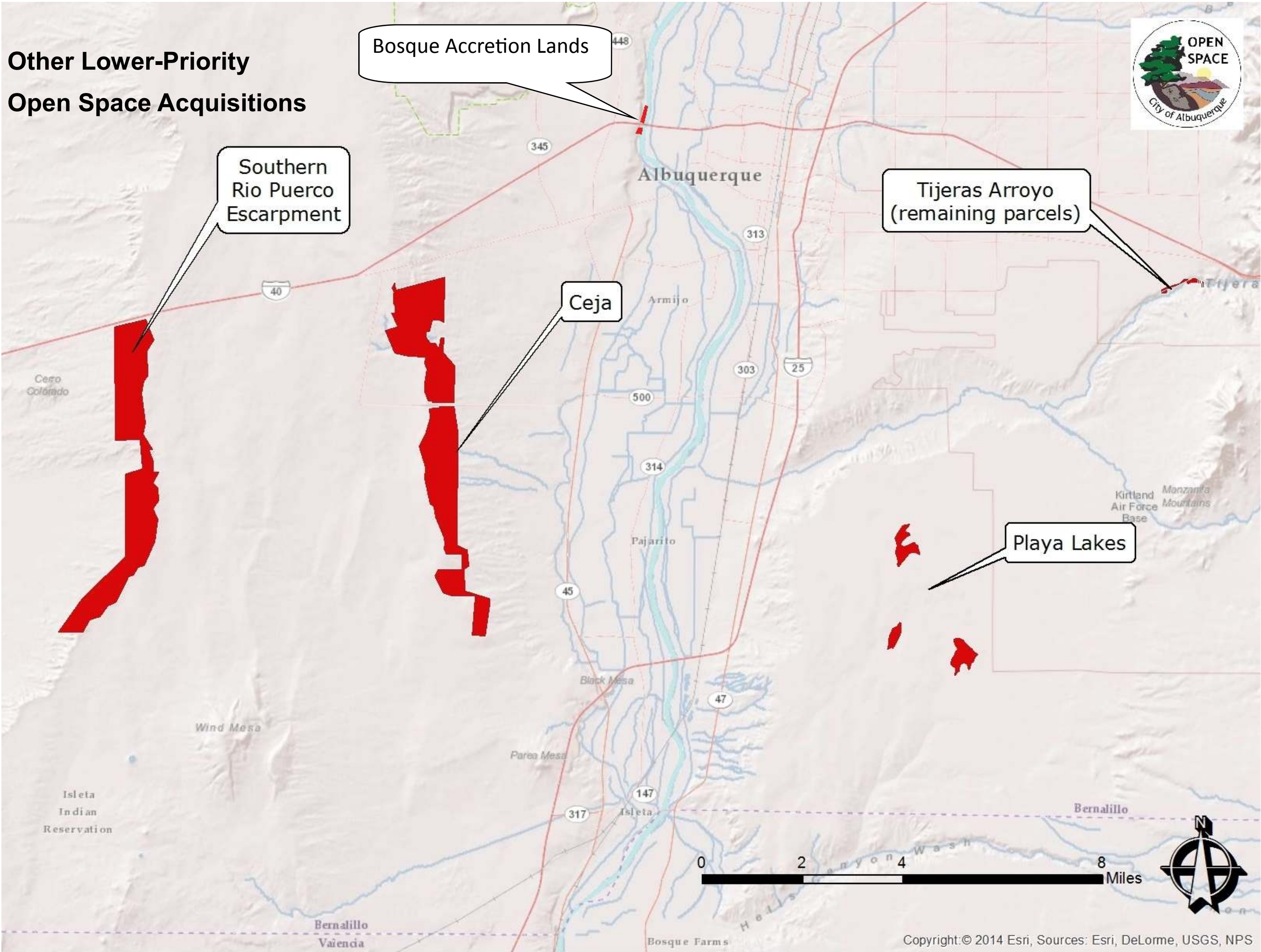
Bosque Accretion Lands

Southern Rio Puerco Escarpment

Ceja

Tijeras Arroyo (remaining parcels)

Playa Lakes



City of Albuquerque Open Space

- Bosque/Farm OS
- East Mountain OS
- Sandoval OS
- Foothills OS
- Tijeras/Manzano/4 Hills OS
- Petroglyph/West Mesa OS
- Petroglyph National Monument
- Trust Lands



0 1 2 4 6 8 Miles

